



## SOFFIATORE ELIET

**BL 450 versione 1** (dal 01-02-2000)

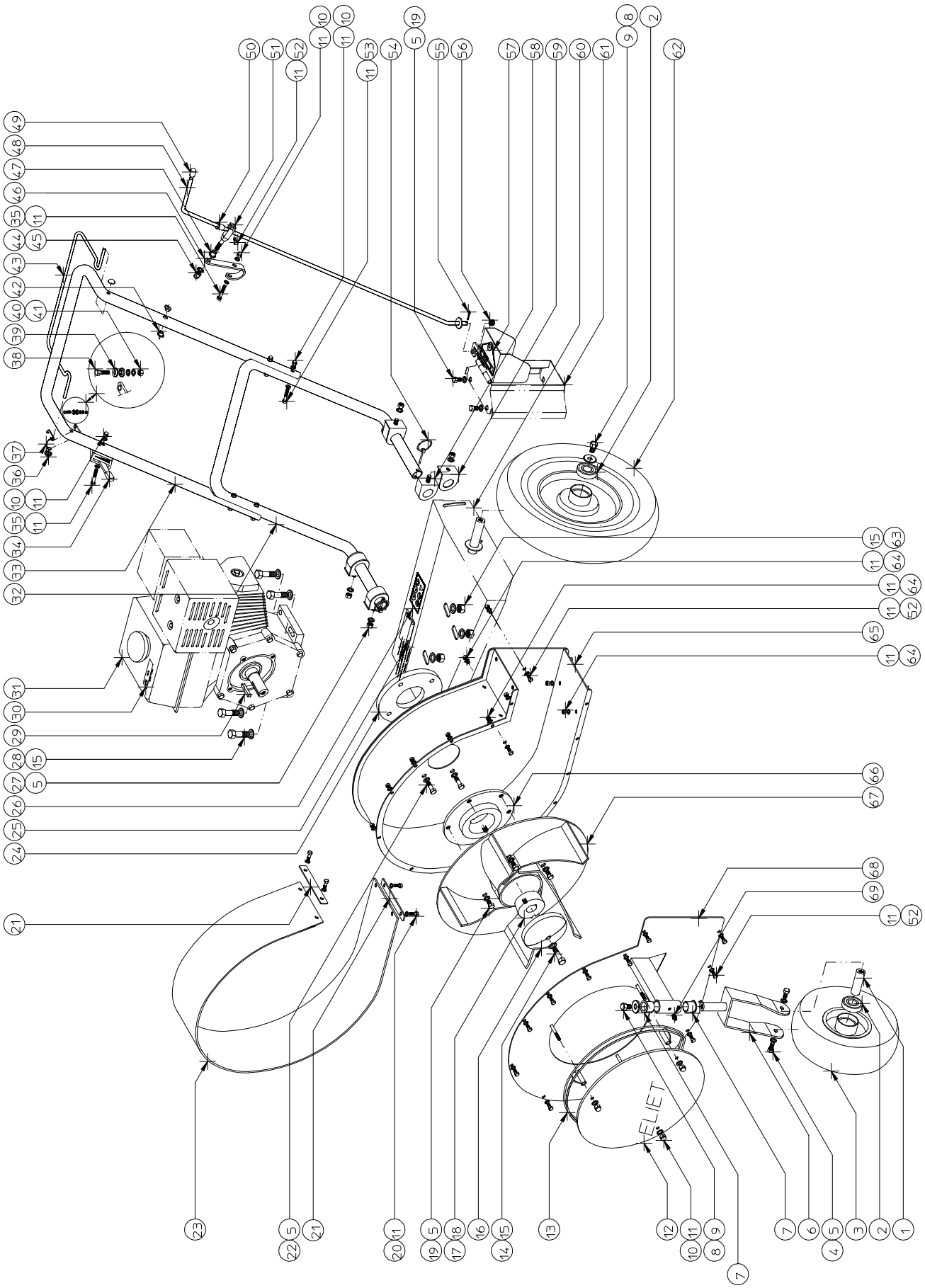
## ESPLOSO RICAMBI

# ELIET SPARE PARTS MANUAL

## BL 450 VERSION 1

### GENERAL OVERVIEW ASSEMBLYLISTS

	LIST NUMBER	DESCRIPTION	DRAWING NR.	BUILT AFTER
1	ASSEMBLYLIST 1	BL 450 -- GENERAL	MMA 01 140 100-1	01/02/2000



ELIET BLADBLAZER 450	
NO	MMMA-01.140.100
REV	1
DATE	2006/07/06

# ELIET SPARE PARTS MANUAL

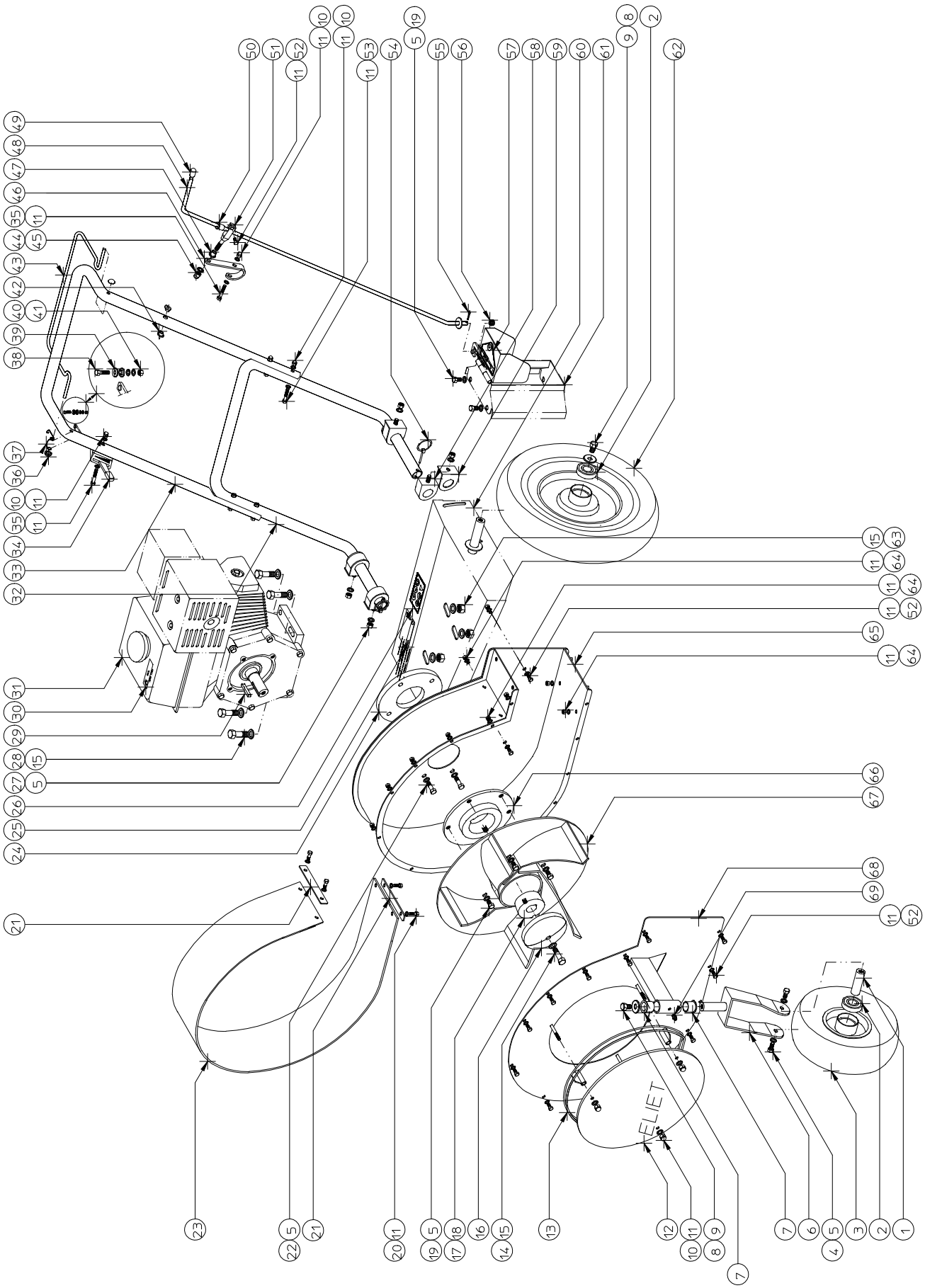
## BL 450 VERSION 1

### ASSEMBLYLIST 1

### BL 450 -- GENERAL

MMA 01 140 100-1

ITEM	PART NUMBER	DESCRIPTION	QUANTITY
1	MPA 01 140 010	WHEEL AXLE	1
2	BL 002 004 703	BEARING 6204 ZZ	4
3	BW 025 020 000	WHEEL 3.00-4	1
4	BS 512 000 820	BOLT M8X20 DIN 933	2
5	BS 531 000 800	WASHER M8 DIN 125	16
6	MPA 01 140 020	WHEEL FORK	1
7	BR 112 202 100	NYLON BUSHING WITH COLAR (20/24/29x21/1)	2
8	BS 512 001 016	BOLT M10X16 DIN 933	3
9	BS 532 010 305	WASHER M10X30X2.5	3
10	BS 505 500 600	NUT M6 DIN 1587	1
11	BS 531 000 600	WASHER M6 DIN 125	41
12	MPA 01 140 190	0	1
14	BS 511 041 042	BOLT UNF 3/8"X2"	1
15	BS 531 001 000	WASHER M10 DIN 125	8
16	BT 162 501 081	0	1
17	BB 501 251 600	TAPERLOCK TL 2012-1"	1
18	BB 501 311 220	SET SCREW 7/16"X7/8"	2
19	BS 512 000 816	BOLT M8X16 DIN 933	5
20	BS 512 000 620	BOLT M6X20 DIN 933	4
21	MPA 01 140 040	0	2
22	BS 511 040 840	BOLT UNF 5/16"X1"1/2	4
23	BR 900 001 260	RUBBER SILENCER	1
24	BR 181 601 500	NYLON BUSHING (60/164x15)	1
25	BQ 505 010 030	STICKER MAX 3200 RPM 90X25	1
26	BQ 505 010 050	SAFETY STICKER 60X100 (PICTOGRAM)	1
27	BS 502 000 800	SELF LOCKING NUT M8 DIN 985	5
28	BS 511 001 041	BOLT M10X45 DIN 931	4
29	BB 342 060 635	KEY 6.35X6.35X35 DIN 6880	1
29	BB 342 060 640	KEY 6.35X6.35X40 DIN 6880	1
30	BQ 505 010 040	SAFETY STICKER 60X100 (SPARK PLUG)	1
31	ENGINE	SEE BOTTOM OF THE PAGE	1
32	MPA 01 140 050	UNDER BRACKET	1
33	MPA 01 140 060	UPPER BRACKET	1
34	BK 161 161 550	THROTTLE CONTROL + CABLE	1
35	BS 511 000 640	BOLT M6X40 DIN 931	6
36	BB 011 000 060	STARLOCK 6MM	1
37	BV 914 000 010	0	1
38	BE 129 000 010	SAFETY SWITCH	0



ELIET BLADBLAZER 450	
NO	MMMA-01.140.100
REV	1
DATE	2006/07/06

# ELIET SPARE PARTS MANUAL

## BL 450 VERSION 1

### ASSEMBLYLIST 1

### BL 450 -- GENERAL

MMA 01 140 100-1

ITEM	PART NUMBER	DESCRIPTION	QUANTITY
38	BS 512 000 416	BOLT M4X16 DIN 933	1
39	BR 112 060 300	NYLON BUSHING WITH COLAR (4.2/5.9/10x3/1.3)	2
40	BS 502 000 400	SELF LOCKING NUT M4 DIN 985	1
41	BS 531 000 400	WASHER M4 DIN 125	2
42	BR 112 060 800	NYLON BUSHING WITH COLAR (6/10/15x8.5/2)	6
43	MPA 01 140 070	SAFETY HANDLE (PRESENCE CONTROL)	1
44	BS 505 500 800	NUT M6 DIN 1587	1
45	BS 534 000 800	LOCK WASHER M8 DIN 6798A	1
46	MPA 01 140 080	0	1
47	BR 112 081 300	NYLON BUSHING WITH COLAR (8/11/16x13/2)	1
48	MPA 01 140 090	0	1
49	BR 020 608 150	PLASTIC CAP 8X15	1
50	BR 112 082 001	NYLON BUSHING WITH COLAR (8/12/16x20/2)	1
51	MPA 01 140 100	0	1
52	BS 512 000 616	BOLT M6X16 DIN 933	14
53	BS 511 000 640	BOLT M6X40 DIN 931	1
54	BB 040 304 030	LOCKING PIN WITH BRACKET 4.5X36	2
55	BB 135 060 351	SPLIT PINS Ø 3,5X35 DIN 94	1
56	BV 911 000 010	SPRING 14X2X16	1
57	BQ 505 010 070	SAFETY STICKER 100X80 (HANDCUTS)	1
58	BR 900 000 400	ANTIVIBRATION BLOCKS	4
59	MPA 01 140 110	0	1
60	MPA 01 140 120	ENGINE PLATE	1
61	MPA 01 140 130	WIND FLOW DEFLECTOR	1
62	BW 040 020 020	WHEEL 4.80-4	2
63	BS 502 001 000	SELF LOCKING NUT M10 DIN 985	4
64	BS 502 000 600	SELF LOCKING NUT M6 DIN 985	17
65	MPA 01 140 140	TURBINE	1
66	BA 281 753 201	FLANGE Ø175x32 - TL 2012	1
67	MPA 01 140 150	IMPELLOR 5 WINGS	1
67	MPA 01 140 170	IMPELLOR 5 WINGS ALU	0
68	MPA 01 140 160	FRONT PLATE TURBINE	1
69	BY 100 106 100	GREASE FITTING M6	1

ENGINE	BM 201 309 000	B&S VANGUARD
ENGINE	BM 201 313 000	B&S VANGUARD
ENGINE	BM 202 109 000	HONDA GX 270
ENGINE	BM 202 113 000	HONDA GX 390